

Rivers and streams

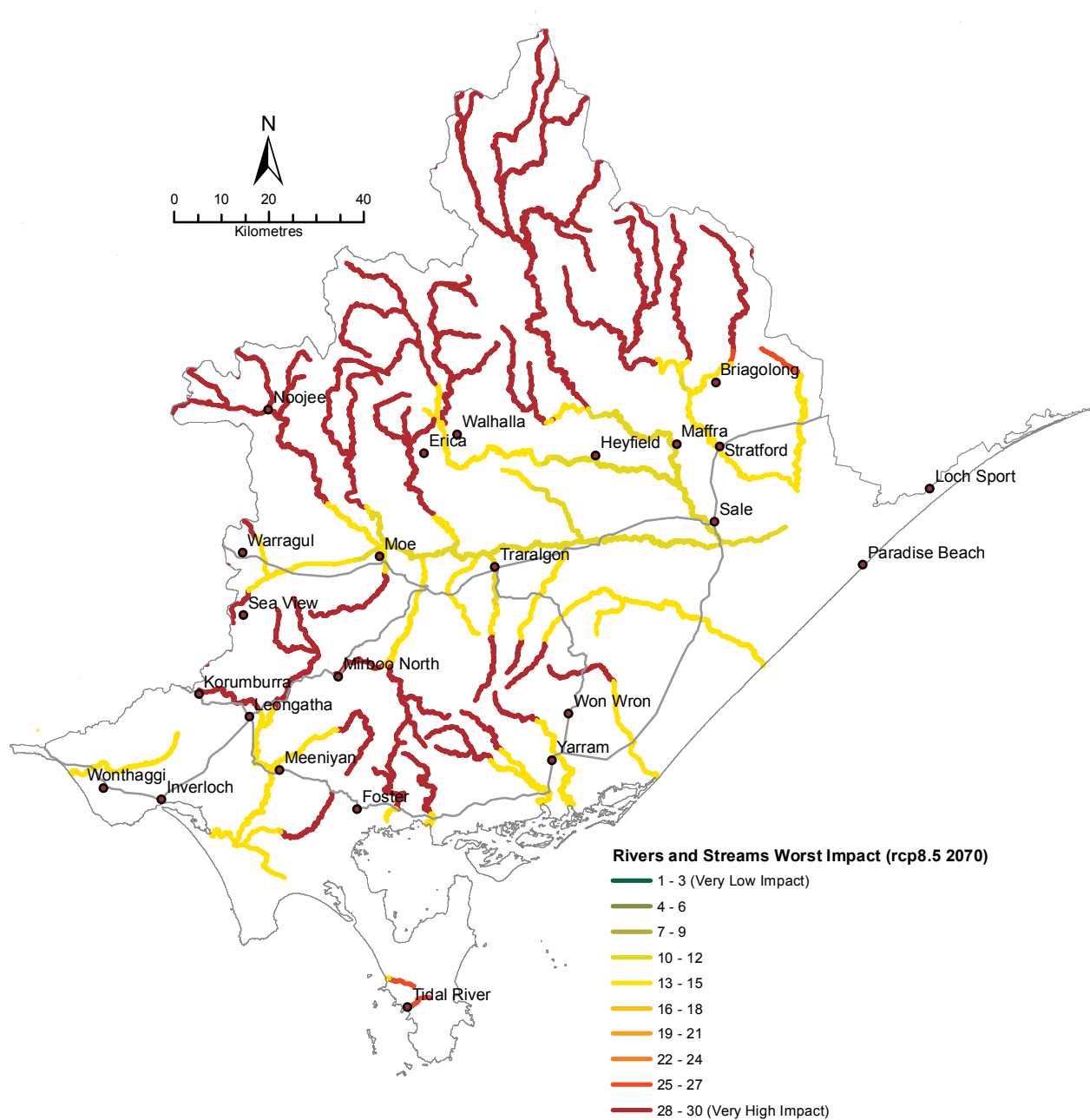


Figure 22: Vulnerability assessment results: rivers and streams worst impact (RCP 8.5 2070)

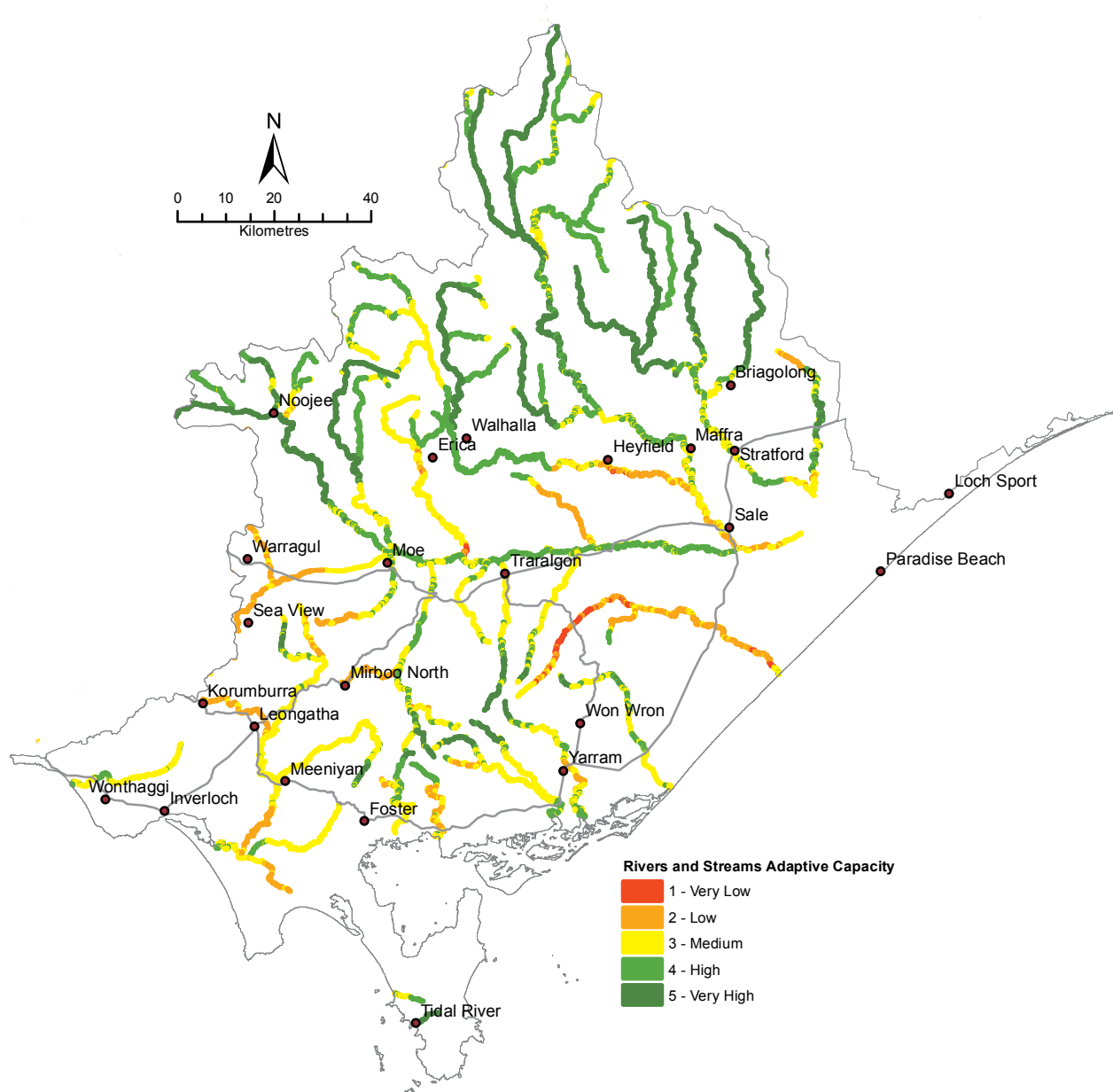


Figure 23: Vulnerability assessment results: rivers and streams adaptive capacity

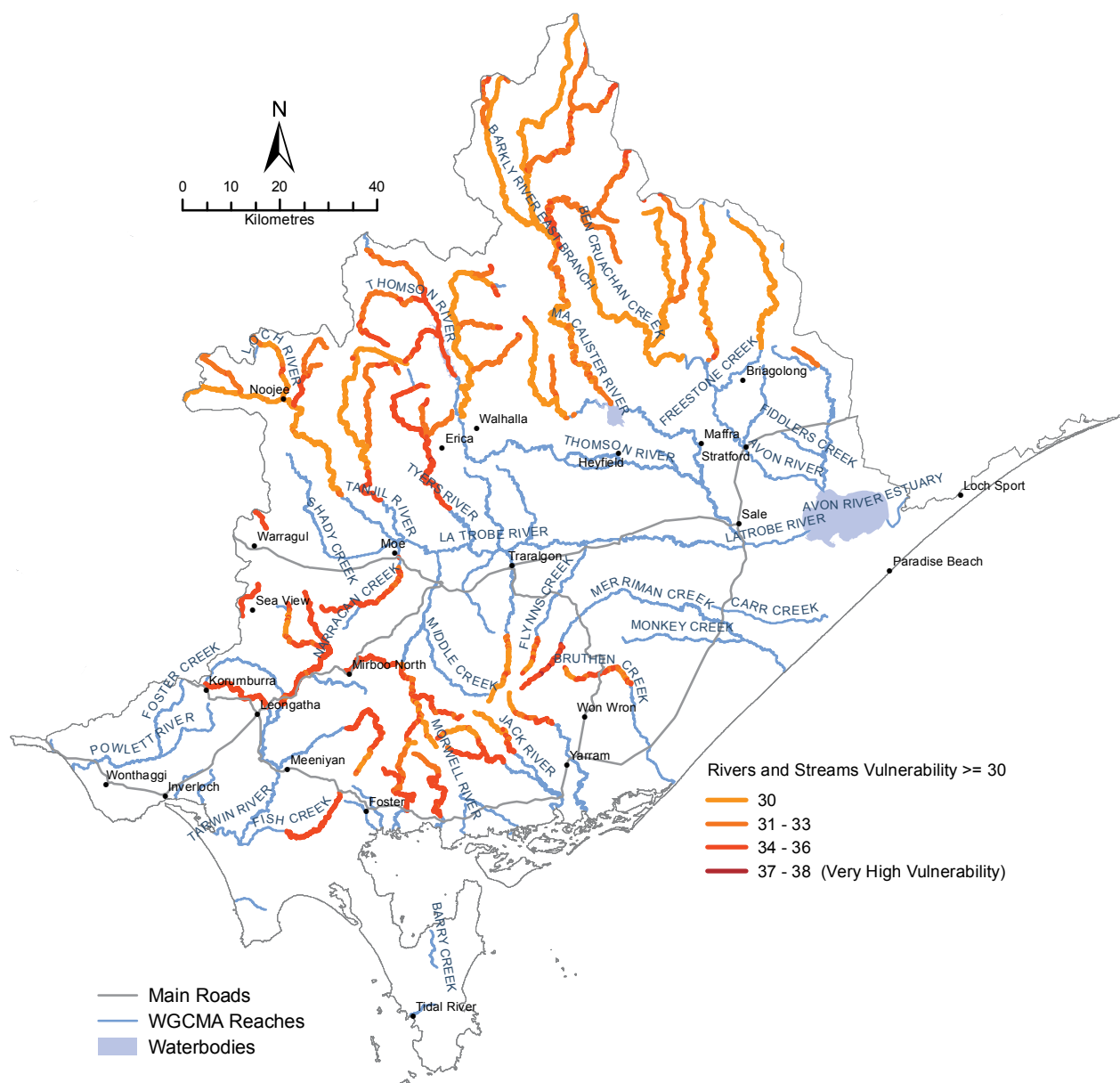


Figure 24: Location of rivers and streams with a very high potential vulnerability in West Gippsland (RCP 8.5 2070)

Estuaries

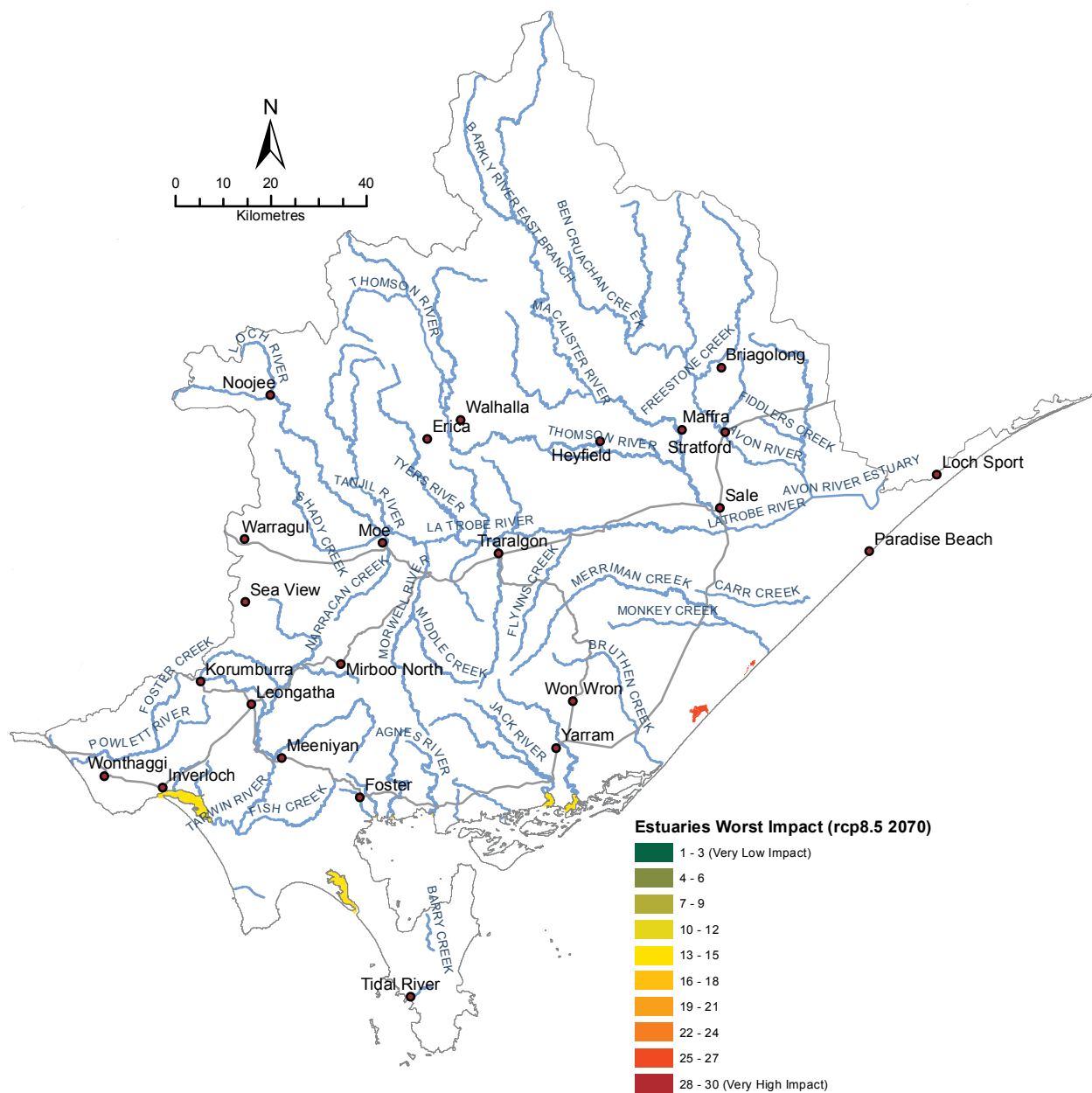


Figure 25: Vulnerability assessment results: estuaries worst impact (RCP 8.5 2070)



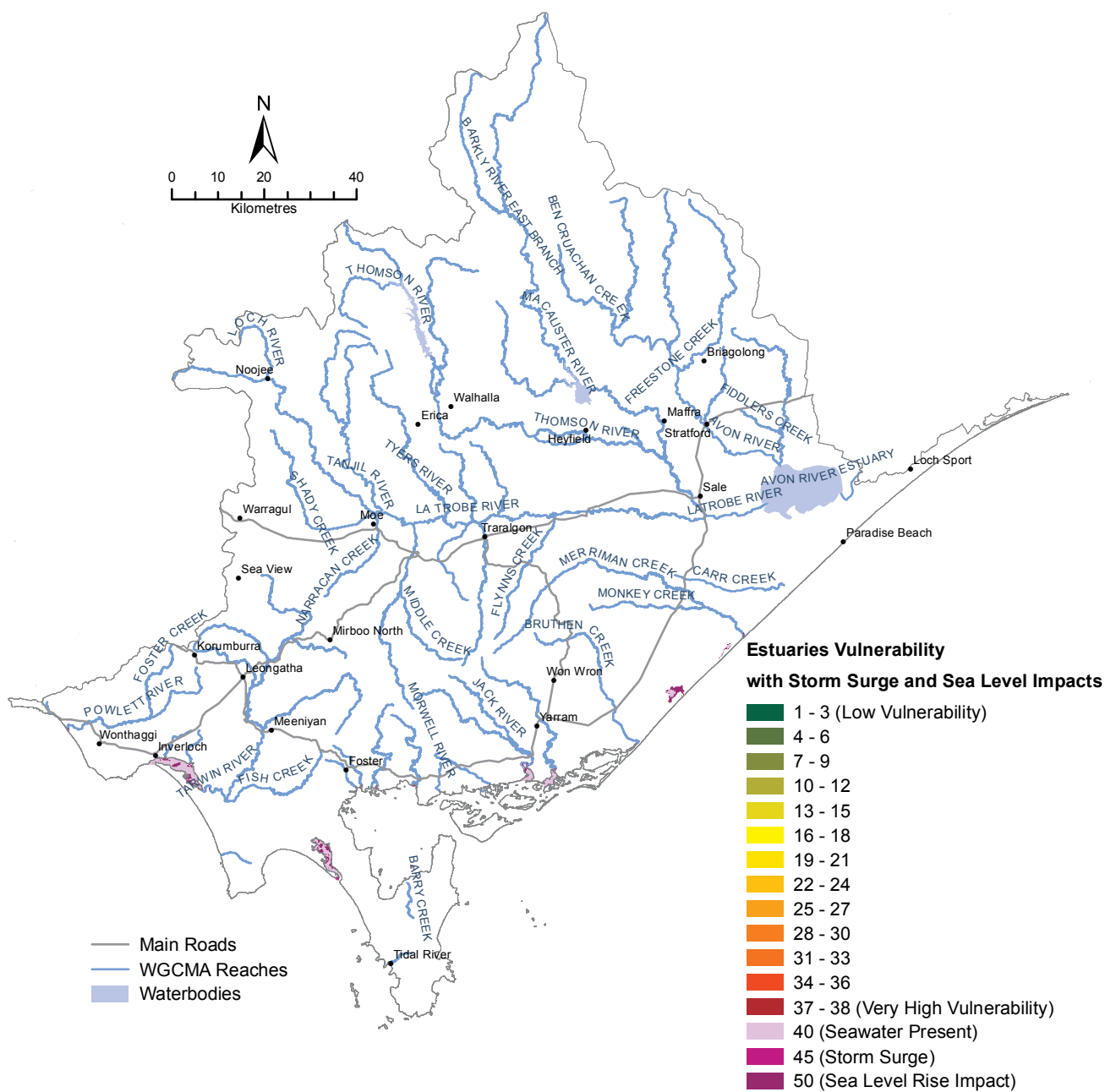


Figure 27: Vulnerability of estuaries in West Gippsland overlaid with storm surge and sea level rise impacts (RCP 8.5 2070)

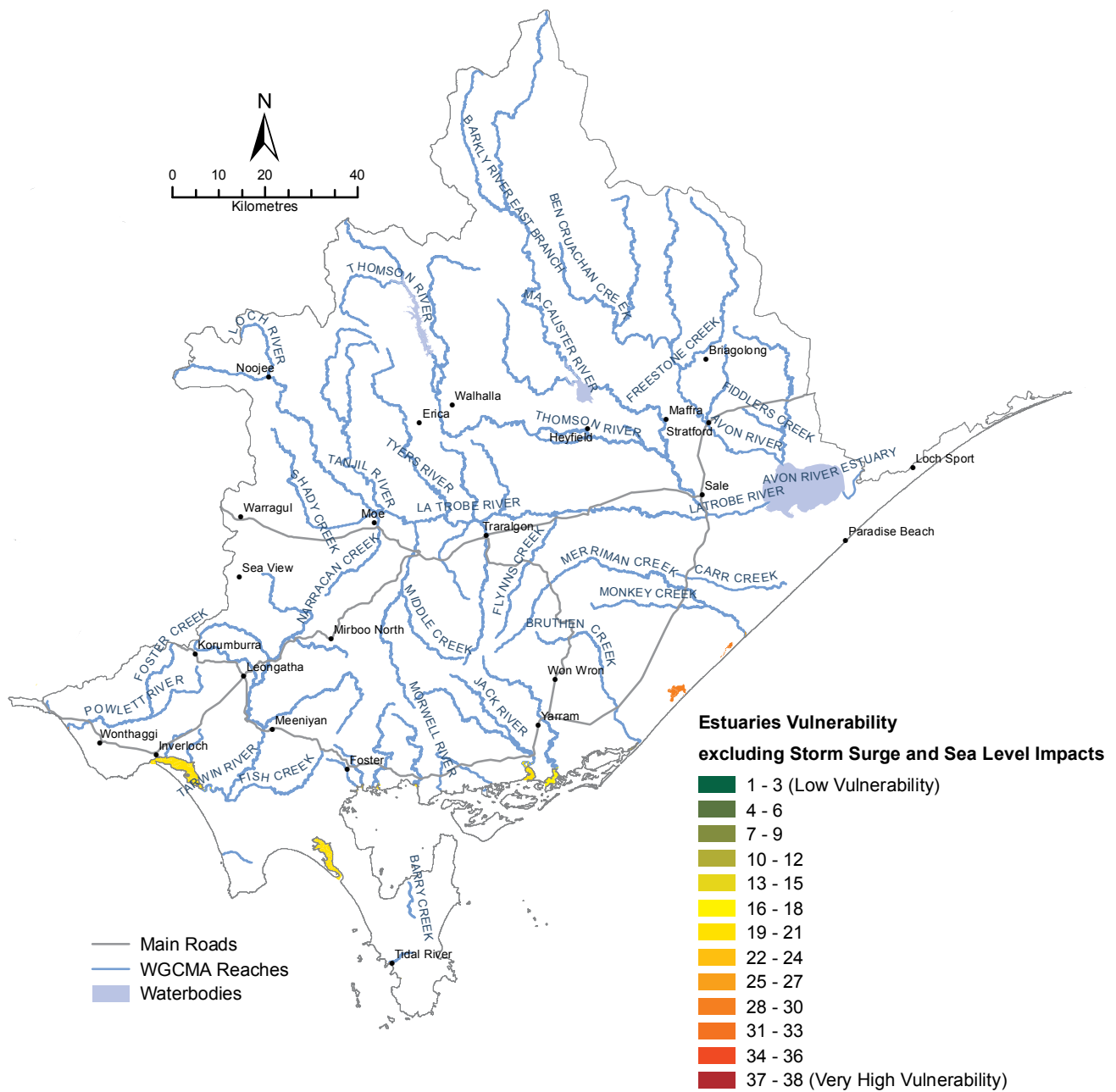


Figure 28: Vulnerability of estuaries in West Gippsland (excluding storm surge and sea level rise impacts) (RCP 8.5 2070)

Inland wetlands

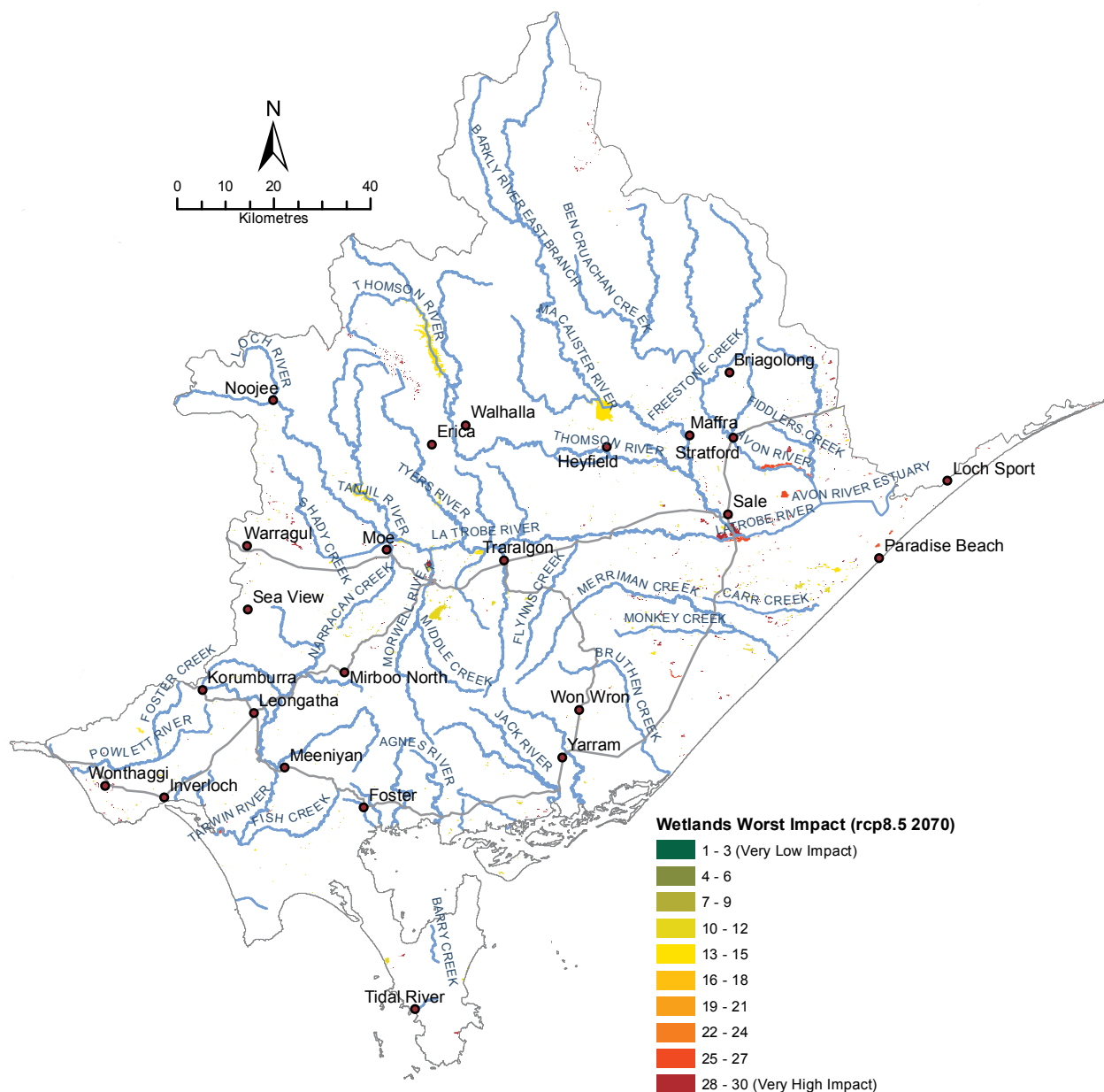
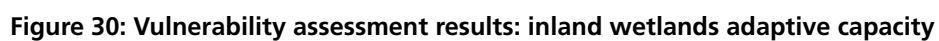


Figure 29: Vulnerability assessment results: inland wetlands worst impact (RCP 8.5 2070)



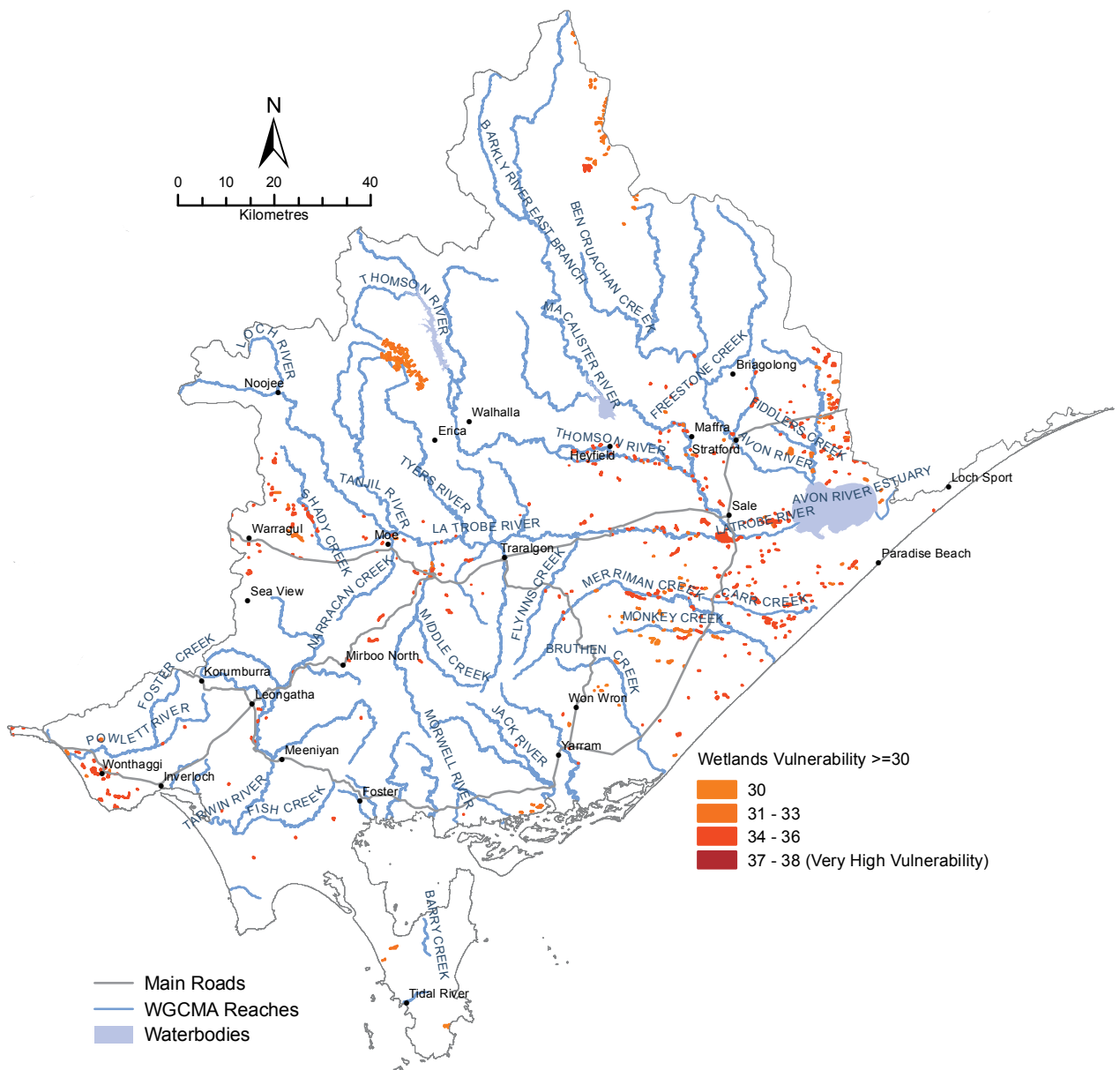


Figure 31: Location of inland wetlands with a very high potential vulnerability in West Gippsland (RCP 8.5 2070)

Coastal wetlands

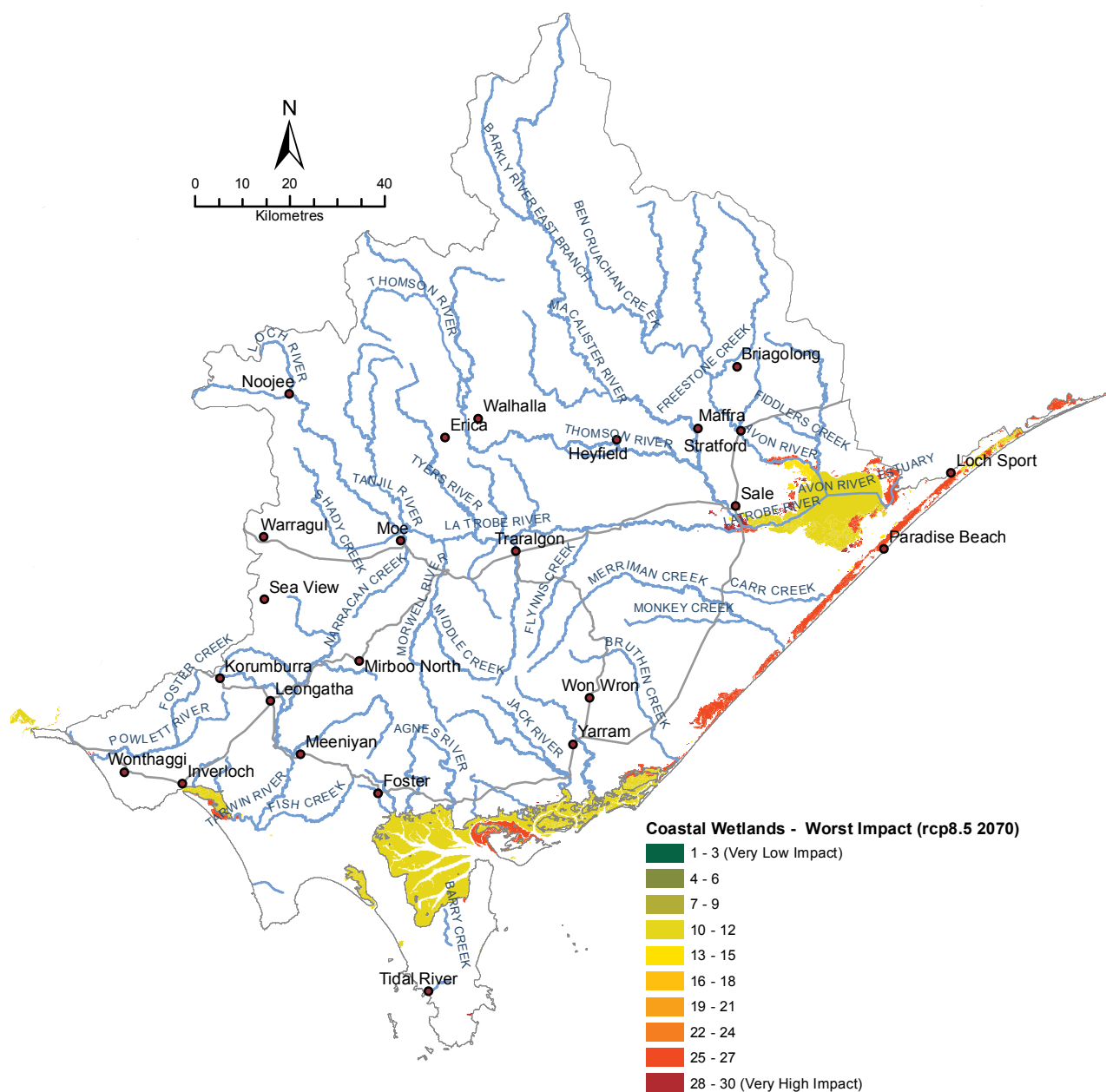


Figure 32: Vulnerability assessment results: coastal wetlands worst impact (RCP 8.5 2070)

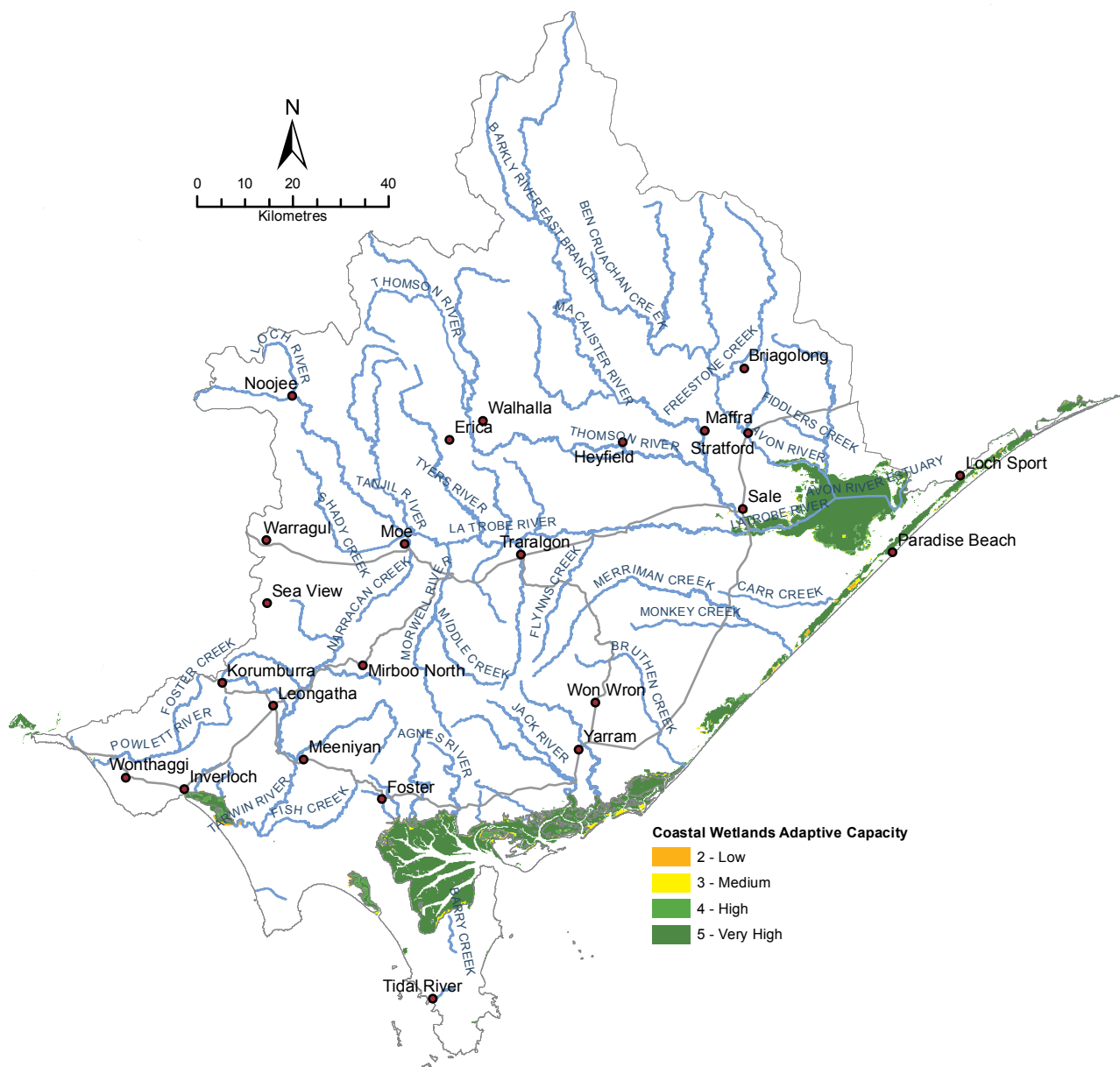


Figure 33: Vulnerability assessment results: coastal wetlands adaptive capacity

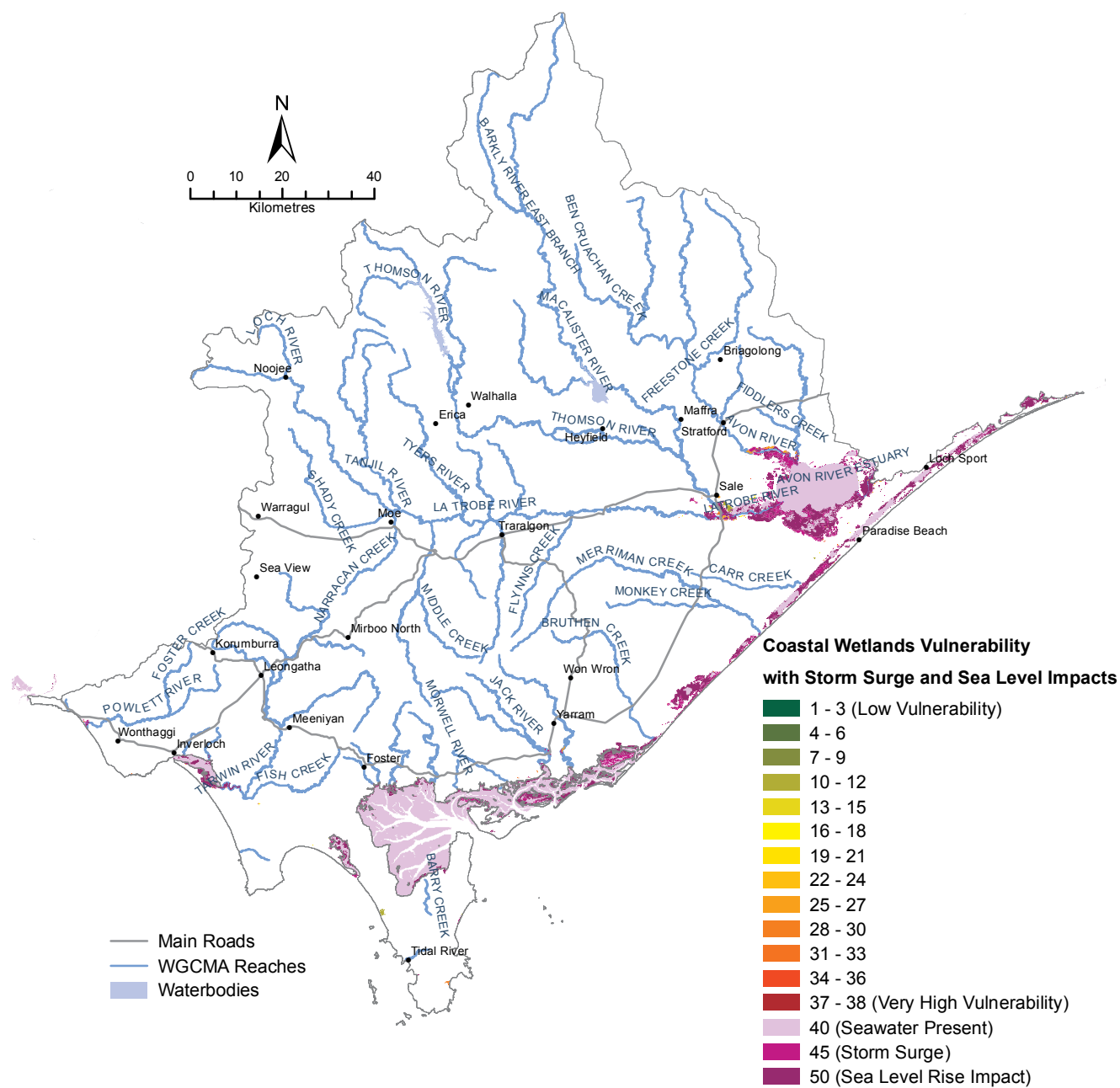


Figure 34: Vulnerability of coastal wetlands in West Gippsland overlaid with storm surge and sea level rise impacts (RCP 8.5 2070)

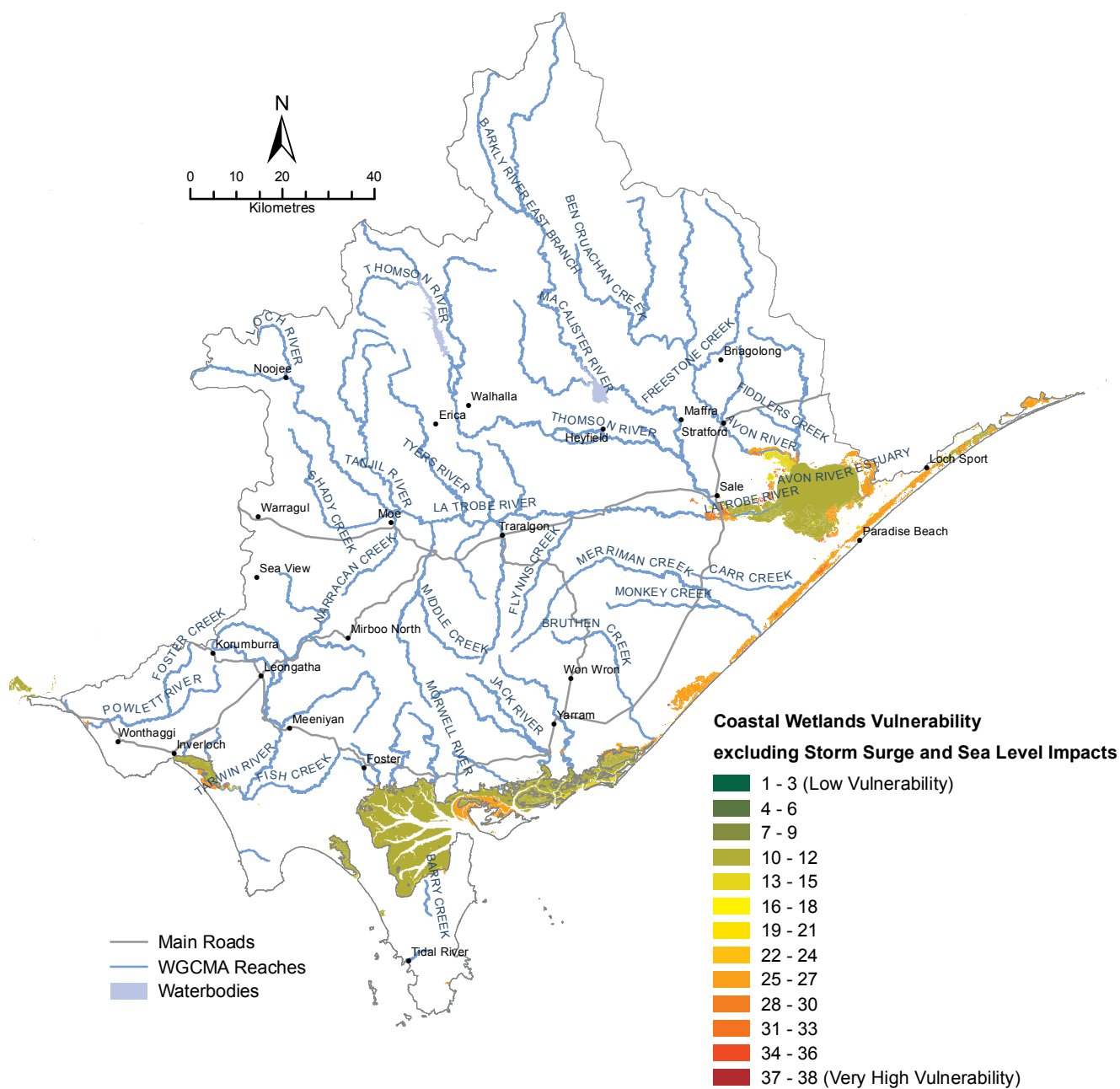


Figure 35: Vulnerability of coastal wetlands in West Gippsland (excluding storm surge and sea level rise impacts) (RCP 8.5 2070)

Appendix 3

Summary of assets with highest vulnerability to climate change across the West Gippsland region

Table 14: Highest potentially vulnerable rivers and streams in West Gippsland (RCP 8.5, 2070)

Name	Reach	Priority RCS Asset	RCS Landscape Priority Area						
			BC	CIN	GLH	MUL	STR	VA	WP
Aberfeldy River	25-18	Yes						x	
Ada River	-	No						x	
Agnes River	27-26	No					x		
Agnes River	27-25	Yes		x			x		
Albert River	27-30	No					x		
Albert River	27-29	No					x		
Avon River	25-22	Yes						x	
Barkly River East Branch	25-13	Yes						x	
Bear Creek	-	No					x		
Ben Cruachan Creek	25-31	No						x	
Berry's Creek	27-19	No					x		
Bruthen Creek	27-38	No				x	x		
Coalition Creek	27-17	No					x		
Fish Creek	27-14	No					x		
Flynns Creek	26-8	No					x		
Franklin River	27-22	No					x		
Franklin River	27-21	No		x			x		
Freestone Creek	25-28	No						x	
Glenmaggie Creek	25-15	No						x	
Glenmaggie Creek	25-14	No			x			x	
Jack River	27-32	No					x		
Jordan River	25-6	No						x	
Latrobe River	26-7	Yes						x	
Latrobe River	26-6	No						x	
Latrobe River	26-5	No						x	
Loch River	26-30	Yes						x	
Macalister River	25-12	Yes						x	
Macalister River	25-11	No						x	
Macalister River	25-10	No						x	

BC = Bunurong Coastal; CIN = Corner Inlet Nooramunga; GLH = Gippsland Lakes & Hinterland; MUL = Mullungdung; STR = Strzelecki Ranges; VA = Victorian Alps; WP = Wilsons Promontory.

Table 14: Highest potentially vulnerable rivers and streams in West Gippsland (RCP 8.5, 2070)
continued

Name	Reach	Priority RCS Asset	RCS Landscape Priority Area						
			BC	CIN	GLH	MUL	STR	VA	WP
Macalister River	25-9	No			x			x	
Merriman Creek	27-41	No					x		
Merriman Creek	27-40	No					x		
Moe River	-	No					x		
Morwell River	26-20	No					x		
Morwell River	26-19	No					x		
Narracan Creek	26-26	No					x		
Tanjil River West Branch	26-25	No						x	
Tanjil River East Branch	26-24	No						x	
Tarra River	27-35	Yes					x		
Tarra River	27-34	No					x		
Tarwin River East Branch	27-16	No					x		
Tarwin River East Branch	27-15	No					x		
Tarwin River West Branch	27-12	No					x		
Tarwin River West Branch	27-11	No					x		
Thomson River	25-99	Yes						x	
Traralgon Creek	26-12	No					x		
Traralgon Creek	26-11	No					x		
Tyers River	26-17	Yes						x	
Tyers River	26-16	No						x	
Valencia Creek	25-30	No						x	
Valencia Creek	25-29	No			x			x	

BC = Bunurong Coastal; CIN = Corner Inlet Nooramunga; GLH = Gippsland Lakes & Hinterland;
 MUL = Mullungdung; STR = Strzelecki Ranges; VA = Victorian Alps; WP = Wilsons Promontory.

Table 15: Highest potentially vulnerable inland wetland assets in West Gippsland (RCP 8.5, 2070)

Wetland complex	Priority RCS Asset	RCS Landscape Priority Area						
		BC	CIN	GLH	MUL	STR	VA	WP
Baw Baw Plateau Wetlands	Yes						x	
Bunurong Coast Wetlands	Yes	x						
Lake Wellington Wetlands	No			x				
Lower Avon Wetlands	Yes			x				
Lower Latrobe Wetlands	No			x	x			
Lower Macalister Wetlands	No			x				
Lower Tarra River Wetlands	No				x			
Lower Tarwin River Wetlands	No	x				x		
Lower Thomson Wetlands	No			x				
Merriman Creek Wetlands	No				x	x		
Perry River Wetlands	Yes			x				
Upper Macalister Wetlands	Yes						x	
Wilsons Promontory Wetlands	Yes							x

BC = Bunurong Coastal; CIN = Corner Inlet Nooramunga; GLH = Gippsland Lakes & Hinterland; MUL = Mullungdung; STR = Strzelecki Ranges; VA = Victorian Alps; WP = Wilsons Promontory.

Table 16: Highest potentially vulnerable coastal wetland assets in West Gippsland (RCP 8.5, 2070)

Wetland complex	Sea level rise impact	Storm surge impact	Priority RCS Asset	RCS Landscape Priority Area						
				BC	CIN	GLH	MUL	STR	VA	WP
Bunurong Coast Wetlands		Yes	Yes	x						
Corner Inlet and Nooramunga Wetlands	Yes		Yes		x					
Gippsland Lakes Fringing Wetlands	Yes	Yes	Yes			x				
Jack Smith Lake	Yes	Yes	Yes				x			
Lake Wellington Wetlands	Yes	Yes	No			x				
Lower Avon Wetlands	Yes	Yes	Yes			x				
Lower Latrobe Wetlands	Yes	Yes	No			x				
Lower Tarra River Wetlands			No		x					
Lower Thomson Wetlands		Yes	No			x				
Merriman Creek Wetlands	Yes	Yes	No				x			
Perry River Wetlands	Yes	Yes	Yes			x				
Shallow Inlet and Venus Bay Wetlands	Yes	Yes	No	x						
Wilsons Promontory Wetlands	Yes	Yes	Yes							x

BC = Bunurong Coastal; CIN = Corner Inlet Nooramunga; GLH = Gippsland Lakes & Hinterland; MUL = Mullungdung; STR = Strzelecki Ranges; VA = Victorian Alps; WP = Wilsons Promontory.

Table 17: Highest potentially vulnerable estuary assets in West Gippsland (RCP 8.5, 2070)

Name	Subject to sea level rise	Subject to Storm Surge	Sea/coastal water level increase	Priority RCS Asset	RCS Landscape Priority Area
Darby River	Not subject to change from sea level rise			Yes	Wilsons Promontory
Jack Smith Lake	Yes		Yes	Yes	Mullungdung
Lake Denison	Yes		Yes	No	Mullungdung
Powlett River	Yes			Yes	Bunurong Coastal
Tidal River	Yes			Yes	Wilsons Promontory
Merriman Creek	Yes	Yes		Yes	Mullungdung
Agnes River	Yes		Yes	Yes	Corner Inlet Nooramunga
Albert River	Yes	Yes	Yes	Yes	Corner Inlet Nooramunga
Anderson Inlet	Yes	Yes	Yes	Yes	Bunurong Coastal
Bennison Creek	Yes			Yes	Corner Inlet Nooramunga
Bruthen Creek	Yes		Yes	Yes	Corner Inlet Nooramunga
Franklin River	Yes		Yes	Yes	Corner Inlet Nooramunga
Nine Mile Creek	Yes			Yes	Corner Inlet Nooramunga
Shady Creek Estuary	Yes			No	Corner Inlet Nooramunga
Shallow Inlet	Yes	Yes	Yes	Yes	Bunurong Coastal
Tarwin River	Yes		Yes	Yes	Bunurong Coastal
Tarra River	Yes	Yes	Yes	Yes	Corner Inlet Nooramunga
Growler Creek Estuary	Yes		Yes	No	Wilsons Promontory
Old Hat Creek	Yes		Yes	Yes	Corner Inlet Nooramunga
Stockyard Creek	Yes			Yes	Corner Inlet Nooramunga

Table 18: Highest potentially vulnerable broad native vegetation communities in West Gippsland (RCP 8.5, 2070)

Vegetation Group	Priority RCS Asset	RCS Landscape Priority Area						
		BC	CIN	GLH	MUL	STR	VA	WP
Herb-rich Woodlands – Damp Sands	Yes	x	x	x	x			x
Lower Slopes or Hills Woodlands – Seasonally inundated and/or shrubby	Yes			x				
Rocky Outcrop or Escarpment Scrubs	Yes			x			x	x
Wet or Damp Forest	Yes	x	x	x	x	x	x	x
Rainforests	Yes		x	x		x	x	x
Wetlands – Freshwater	Yes	x	x	x	x			x
Montane Grasslands, Shrublands or Woodlands	Yes						x	x
Heathlands subalpine	Yes						x	
Dry Forests – Sheltered and/or higher altitude	Yes	x	x	x		x	x	x
Heathy Woodlands – Damp and/or less well-drained	Yes	x	x			x		
Herb-rich Woodlands – Alluvial terraces and/or creeklines	No				x			

BC = Bunurong Coastal; CIN = Corner Inlet Nooramunga; GLH = Gippsland Lakes & Hinterland; MUL = Mullungdung; STR = Strzelecki Ranges; VA = Victorian Alps; WP = Wilsons Promontory.

Table 19: Highest potentially vulnerable broad soil types in West Gippsland (RCP 8.5, 2070)

Soil Type	Priority RCS Asset	RCS Asset name	RCS Landscape Priority Area						
			BC	CIN	GLH	MUL	STR	VA	WP
Pale/calcareous sands, Duplex soils, Saline soils	Yes	Bengworden flats			x				
	Yes	Giffard Plains			x	x			
	Yes	Wilsons Prom and coastal soils	x	x	x	x			x
	No	South Gippsland	x						
	Yes	Tarwin and Powlett catchments	x						
Friable earths stony loams	Yes	Alps						x	
	Yes	Bengworden Flats			x				
	Yes	Red Gum Plains			x				
	Yes	Wilsons Prom and coastal soils							x
	No	South Gippsland	x						
	No	MID			x				
	No	Upper Latrobe catchment			x				
Organic loams	Yes	Bengworden Flats			x				
	Yes	Red Gum Plains			x				
	Yes	Alps						x	
	No	MID			x				

BC = Bunurong Coastal; CIN = Corner Inlet Nooramunga; GLH = Gippsland Lakes & Hinterland; MUL = Mullungdung; STR = Strzelecki Ranges; VA = Victorian Alps; WP = Wilsons Promontory.



Back cover: Powlett River by WGCMA, above: Overlooking Corner Inlet and the catchment by InDetail Comms & PR

**Traralgon Office**

16 Hotham Street
Traralgon VIC 3844

Telephone 1300 094 262
Facsimile 03 5175 7899

Leongatha Office

Corner Young & Bair Streets
Leongatha VIC 3953

Telephone 1300 094 262
Facsimile 03 5662 5569

Correspondence

PO Box 1374, Traralgon 3844

Email

westgippy@wgcma.vic.gov.au

Website

www.wgcma.vic.gov.au