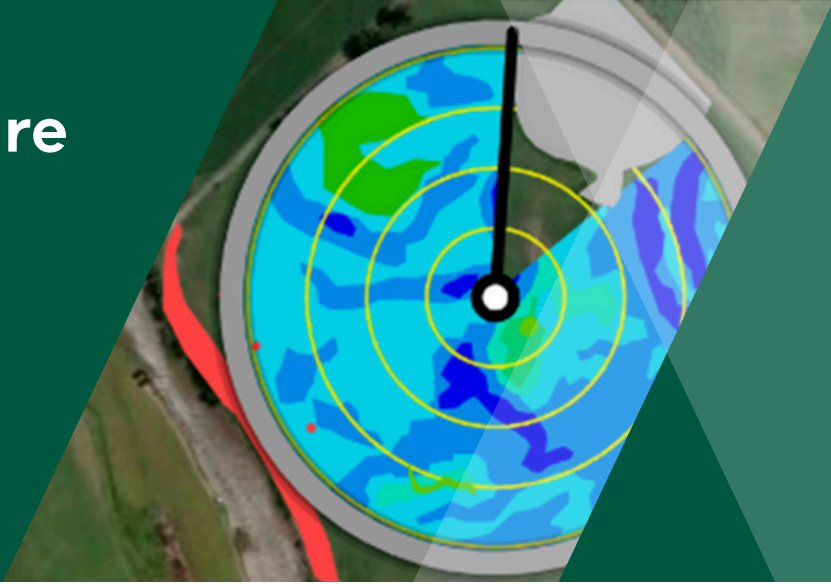


Optimising soil moisture using Variable Rate Irrigation (VRI)

AGRICULTURE VICTORIA



The Sustainable Irrigation Program (SIP) has recently run several irrigation demonstration projects to showcase innovative practices and technologies.

Leathorn Dairies successfully implemented VRI technology and EM38 mapping on their farm in Newry. VRI ameliorated waterlogging issues, increased soil moisture uniformity across the paddock, and used up to 26% less water.

Key results:

- VRI was 95% accurate relative to prescription
- Paired with EM38 mapping VRI reduced water logging and increased moisture uniformity
- Estimated 18% water saving in first irrigation season and 26% in second.



Waterlogged area prior to EM38 mapping and VRI installation.



Waterlogged area much improved after EM38 mapping and two irrigation seasons using VRI.

'The water savings have been huge, we used 18% less in the first season and 26% less in the second.'

-James Clyne

Other learnings:

- Adding effective drainage further reduced waterlogging periods
- Maintaining results requires checking paddock and updating VRI prescription as paddock conditions change.

'We are so happy with the outcome we are putting VRI on all of our machines. I would recommend this technology to anyone with a pivot.'

- James Clyne

Contact:

Caelan McIntosh
0476 885 716

Caelan.McIntosh@agriculture.vic.gov.au